

# XCMG Hydraulic Excavator

XE80C



# Hydraulic Excavator - XE 80 C



A small - displacement turbocharged engine is used which has low noise, small vibration, good fuel economy, strong power and sufficient low-speed torque reserves. Engine maintenance points are arranged on one side for ease of servicing.



The whole machine is equipped with a grease gun bracket and toolbox to facilitate lubrication and maintenance of the machine and to store frequently used maintenance tools.



Key hydraulic components use the latest technological achievements of low energy consumption, fast response, accurate control, small impact, strong excavation capacity and excellent operational efficiency. With the new generation of load-sensitive hydraulic system used, pressure loss of the system is smaller. Output flow of the constant-power variable piston pump always meets the need of multi-way valve core opening. It has no excess flow loss, realizes load-independent flow distribution and has better flexibility in compound action and smoother leveling action.



The replacement cycle of engine oil, filter element, and fuel filter element are extended to 500 hours and the maintenance cost of users have been greatly improved.



Fully open rear cover and side door, daily maintenance points are within easy reach. The rear engine hood and side door are all made of sheet metal, which is safe to use for the environment. A prefilter is added to help better adapt to harsh dusty conditions which can effectively filter large particles of impurities from entering the air filter, thus prolonging the service life of the air filter.

Reasonable distribution of silicone oil shock absorber in the cab and equipped new suspension seat make the operator feel comfortable and easy to operate.



New interiors equipped with cup holder, USB charging seat, mobile phone storage bin, sundry bin, power supply outlet and other humanized design that maximizes comfort and convenience.



The new cab is spacious and comfortable and has beautiful appearance. The rear pillar of the cab uses a concealed design with small blind area which improves the operational safety.

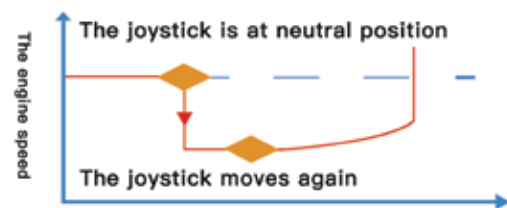


High-power air conditioner is a standard feature. The front window glass is equipped with air conditioning outlet which has defrost function that can eliminate fog and ensure safety.



### New large color LCD monitors

It is ergonomic. It has complete display of instrument information with more automatic control functions and can diagnose causes of faults intelligently, thus effectively reducing the time of troubleshooting. The electronic control system has many practical functions such as automatic idling and acceleration, engine starting protection, engine overheating protection and so on.



### The "automatic idling" function effectively helps to reduce fuel consumption.

When the throttle gear is above four and the joystick is at neutral position for more than four seconds, the engine will automatically reduce the speed saving from unnecessary fuel consumption, noise and exhaust emissions. When the joystick moves again, the engine speed will be restored.

# Hydraulic Excavator - XE80C

## Newly optimized working equipment

A boom part with high stress is partially intensified. The bucket rod is welded with the U-shaped plate formed through compression molding and the upper cover plate, so the bucket rod has a long service life.

### 40%

The new standard bucket enlarges the width of bucket teeth, so the machine has a better leveling effect. The service life of the bucket is increased by more than 40%.

### 20%

The dozer blade structure is optimized and the structural strength is increased by 20%.

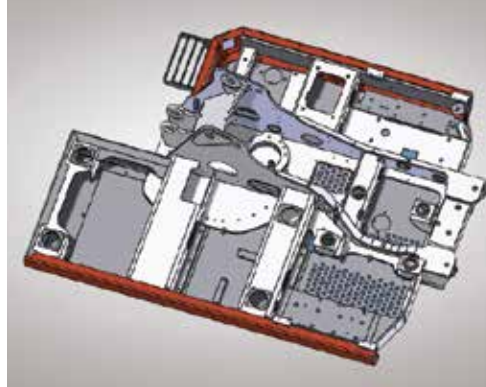
### 30%

The machining accuracy and structure of the track roller are optimized and the overall durability is increased by 30%.

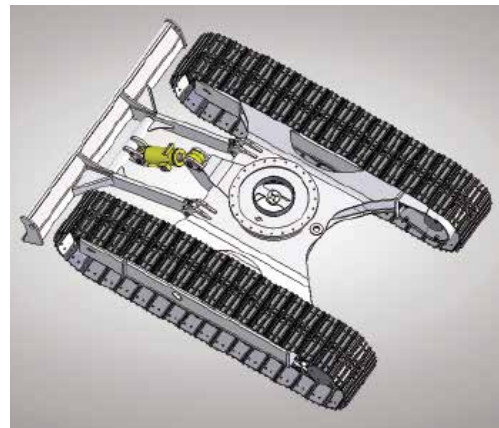




### Highly reliable turntable



The main frame of turntable uses an "I-beam" structure while the side frame uses a "D-section" structure, so the turntable has higher reliability.

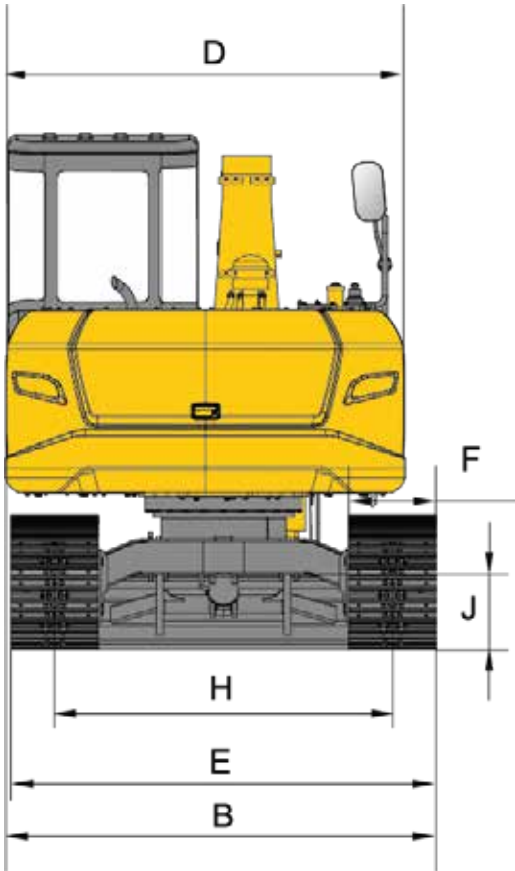
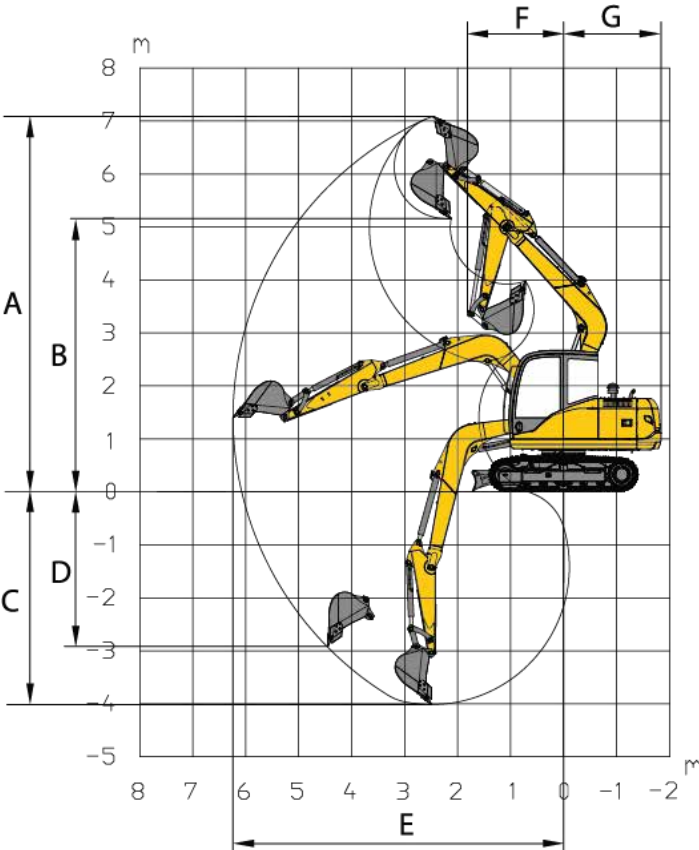
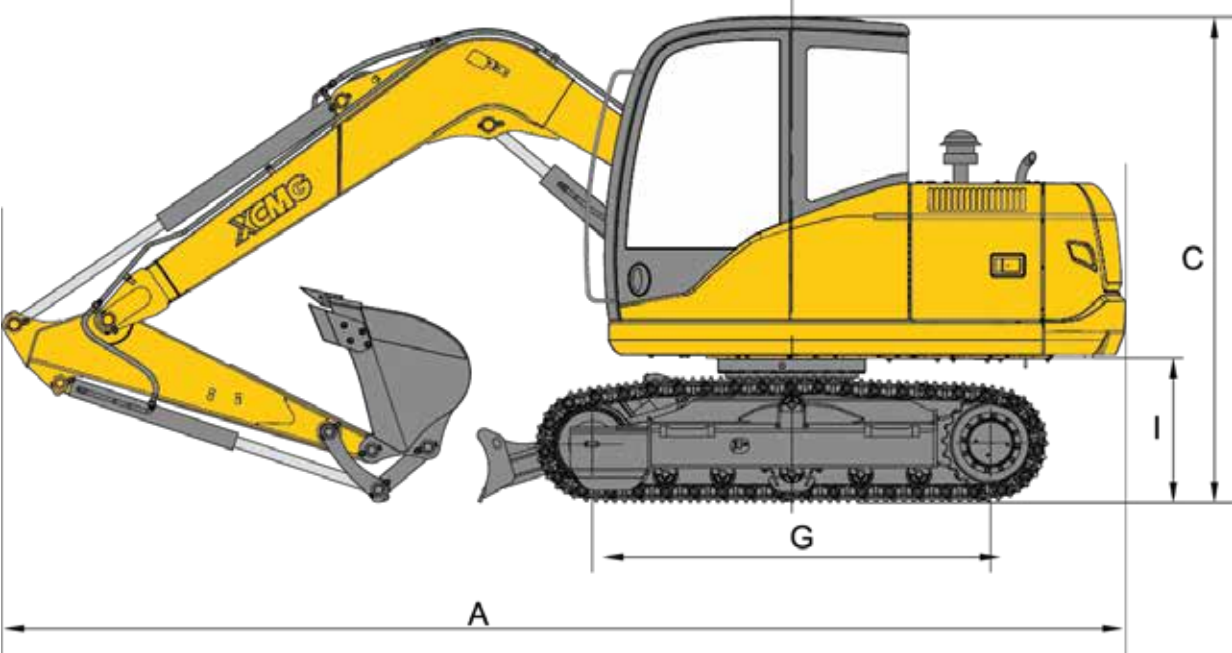


### Strengthened chassis structure

An X-frame chassis structure is adopted to form a large cross-section box through reinforcing ribs inside the lower frame which has good load-bearing performance. The weight of the superstructure can be uniformly applied to the track frame, thus reducing local stress concentration of the track frame. International standard reinforced crawlers are used which are more reliable and convenient for use and maintenance.

# Hydraulic Excavator - XE 80 C

Overall dimensions (mm)




## Main Technical Parameters

	Parameter	Unit	Value
Operating range	A Maximum digging height	mm	7085
	B Maximum dumping height	mm	5160
	C Maximum digging depth	mm	4020
	D Maximum vertical digging depth	mm	2920
	E maximum digging radius	mm	6260
	F minimum swing radius	mm	1818
	G minimum tail swing radius	mm	1800
	Maximum lifting height of dozer blade	mm	363
	Maximum digging depth of dozer blade	mm	346
	Shape/dimensions	A Overall length	mm
B Overall width		mm	2230
C Overall height		mm	2685
D Width of platform		mm	2070
E Overall width of chassis		mm	2200
F Track width		mm	450
G Length to center of rollers		mm	2195
H Track gauge		mm	1750
I Counterweight clearance		mm	815
J Minimum ground clearance		mm	380
Dozer blade (width/height)		mm	2200/396
Engine	Engine model		V2607-DI-TE3B
	Direct injection		√
	Four strokes		√
	Water cooling		√
	Turbocharging		√
	Number of cylinders		4
	Engine rated power	kw/rpm	42.4/2000
	Max. torque/speed	N.m	225.8/1400-1800
	Displacement	L	2.615
Main performance	Travel speed	km/h	5.4/2.9
	Swing speed	r/min	10
	Gradeability	Deg	35
	Ground pressure	kPa	33.5
	Bucket digging force	kN	57
	Arm digging force	kN	38
	Max. traction	kN	68.3
	Hydraulic system	Rated main pump flow	L/min
Working pressure		MPa	27.5
Traveling system pressure		MPa	26.5
Slewing system pressure		MPa	18.6
Pilot system pressure		MPa	3.5
Fuel capacity	Fuel tank capacity	L	130
	Hydraulic oil tank volume	L	76
	Engine oil capacity	L	10

# SCHWING - STETTER ALWAYS CLOSE TO THE CUSTOMER.



-  Sales Office
-  Resident Engineer
-  Resident Engineer with Spares Depot
-  Service Centre with Spares Depot
-  Dealership Support
-  Customer Training Center

## SCHWING STETTER (INDIA) PVT LTD

An ISO 9001 : 2015 Company

**CORPORATE OFFICE** : F 71 - 72, SIPCOT Industrial Park, Irungattukottai, Sriperumbudur Taluk, Kancheepuram District, Tamil Nadu - 602117.  
Tel : 044 - 71378100 / 106  
Email : chennai@schwingstetterindia.com

**Mumbai** : 620/621, Nirmal Lifestyle Corporate Centre, 6th floor, LBS Marg, Mulund (West), Mumbai 400080.  
Tel : 022 25624863 / 64, 30718300, 71378100  
Fax : 022 25624865 / 66  
Email : mumbai@schwingstetterindia.com

**New Delhi** : 19, Okhla Industrial Estate, Phase III, New Delhi - 110 020.  
Tel : 011 30928500 Fax : 011 30928530  
Email : newdelhi@schwingstetterindia.com

**Kolkata** : Y6, Block EP, Sector V, Electronics Complex, Salt Lake City, Kolkata-700091. Tel: 033 40823300  
Email : kolkata@schwingstetterindia.com

**Hyderabad** : No.8-2-268/1/C, Plot 2, Road 3, Arora Colony, Banjara Hills, Hyderabad-500034.  
Tel: 040 33555588 / 47848601 Fax: 040 23731770  
Email : hyderabad@schwingstetterindia.com

**Mohali** : D 91-PH-VII, Industrial Area, Mohali, Punjab - 160 055. Tel : 0172 3957500 / 3957501  
Email : chandigarh@schwingstetterindia.com

**Bengaluru** : No 138-B, "UDAYAGIRI COMPLEX", 3rd Phase, KIADB Industrial area, Peenya, Bangalore - 560058.  
Tel : 080 3355 5588 Fax : 080 3011 4301  
Email : bangalore@schwingstetterindia.com

**Visakhapatnam** : Plot No.54, IDA - Block 'D', Expansion, Auto nagar, Visakhapatnam - 530 012.  
Tel : 09100061783 Fax: 0891 2706063

**Jammu** : C/o. VRL Logistics Limited, Plot No. 19, Transport Nagar, Narwal, Jammu - 180006.  
Tel : 099060 35941.

**Ahmedabad** : 103, Shivalik Arcade, 100 Ft., T.P Anand Nagar, Satellite Road, Ahmedabad 380 051.  
Tel : 079 71378100  
Email : ahmedabad@schwingstetterindia.com

**Cochin** : No.134 / 1404 B, Arakkakadavu Road, Anchumana, Edappally P.O. Cochin - 682 024.  
Tel: 0484 - 3355558 / 4055544 Fax: 0484 4506165  
Email : cochin@schwingstetterindia.com

**Bhubaneswar** : Plot No:182, Naharkanta, Rudrapur Beside Puri Main Canal, NH5, Bhubaneswar - 752101 Odisha. Tel : 09078884484 / 85

**Pune** : Baner Biz Bay, A Wing, 7<sup>th</sup> Floor, Office No. A-701 & 702, Baner Road, Near D-Mart, Pune - 411 045. Tel: 020-6718500  
Email : pune@schwingstetterindia.com

**Coimbatore** : 2005, Trichy Road, Old Rajalaxmi Mills, Singanallur, Coimbatore-641005. Tel: 0422 3223660  
Email : coimbatore@schwingstetterindia.com

**Raipur** : NH-6, Opposite Vardhaman Motor, Kumahari, Dist - Durg, Chhattisgarh - 490042.  
Tel : 07821 247066  
Email : sunil.kumar@schwingstetterindia.com

**Patna** : C/o. House of Ashok Kumar Rana, Ground & First Floor, Samridhi Bhawan, Agamkuan Road, Shivaji Colony, Pahari More, Patna - 800007, Bihar. Tel : 09570996702  
Email : rajiv.chandra@schwingstetterindia.com

**Surat** : Shop No. 128, First Floor, Aagam Orchid, TP Scheme No 6, Opp. Shiv Kartik Complex, Off VIP Road, Nr. Shrunagar Building, Nr Nandini 2, Vesu, Surat-395007 Tel : 08980002726  
Email : ahmedabad@schwingstetterindia.com

**Guwahati** : House No. 161, Jaya Nagar, Six Miles, Khanapara, Guwahati 781 022.  
Tel: 0361 2234738 / 099575 66738

**Goa** : C/o Agarwal Packers and Movers Limited, Plot No X-1, Verna Industrial Estate, Verna, Goa - 403722. Tel: 09820203847  
Email : sohit.chakhaiyar@schwingstetterindia.com

**Nagpur** : C/o Amrut Dairy Farm, No. 118, Opp VCA Stadium, Jamtha, 16th KM Milestone, NH-7, Wardha Road, Nagpur - 441108. Tel : 09820203847  
Email : sohit.chakhaiyar@schwingstetterindia.com

**Indore** : Plot No.1074/9/1, A.B. Road (By-Pass), (Opp) Silicon Valley Housing Project, Rau-453331, Indore - 452010. M.P Tel : 08085966587  
Email : ahmedabad@schwingstetterindia.com

**Jaipur** : F-551, Road No. 6, Lehar Choraha, Vishwakarma Industrial Area (VKI Area), Jaipur - 302 013, Rajasthan. Phone: 09672423444